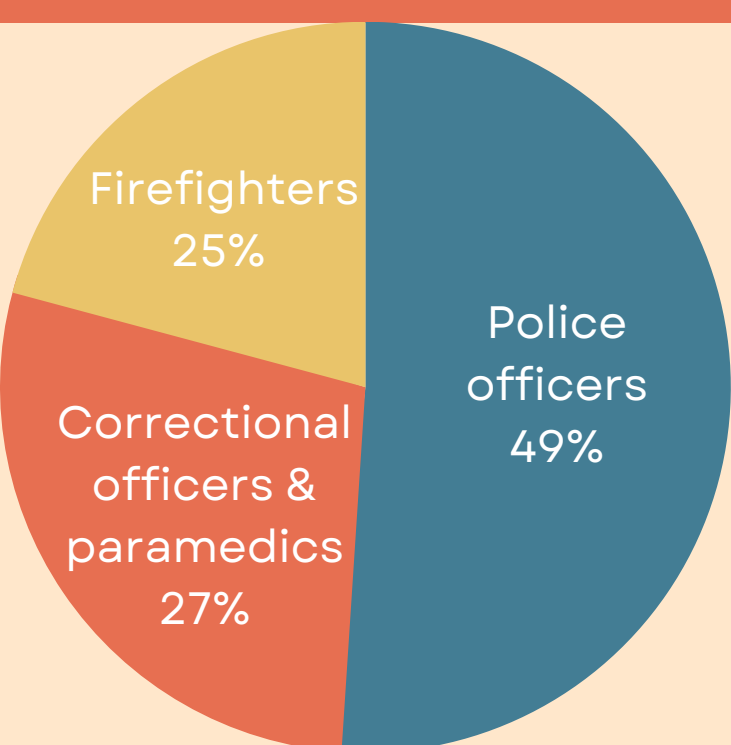
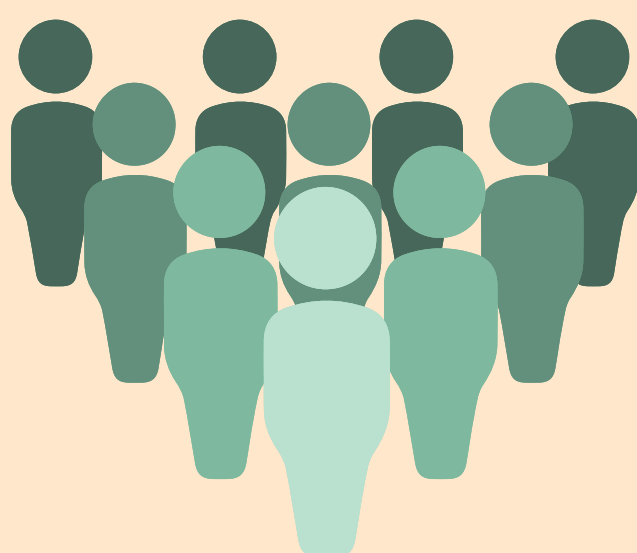


Organizational Factors and Mental Health in Public Safety Organizations

Overview

Public Safety Personnel (PSP)/First Responders encounter situations that can result in psychological trauma, contributing to higher rates of mental health conditions

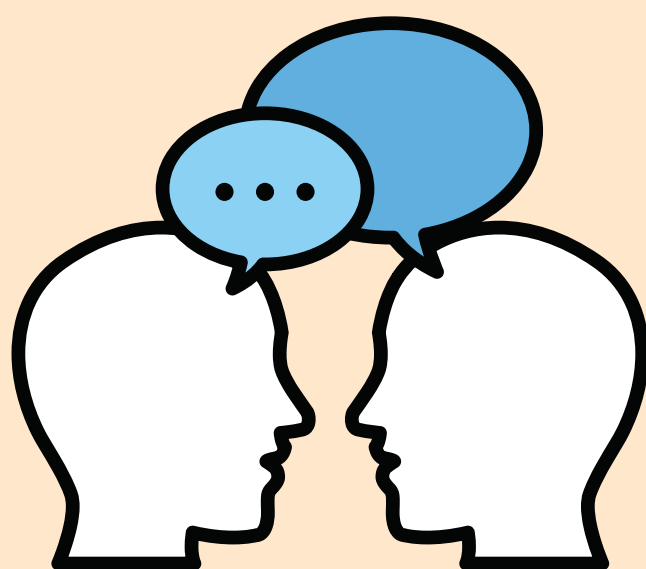


Organizational factors accounted for 34% of the total factors found. Majority of PSP reported that several **organizational factors** impacted their mental health.



Most important **organizational factors** reported to have a positive impact on PSP mental health:

1. Co-worker support
2. Supervisor support
3. Workplace culture



The studies reviewed indicated that **organizational factors** were the most modifiable factors that can have positive impacts for PSP mental health.

Next Steps for Improving PSP Mental Health

Public safety organizations can work to:

- Prioritize supervisor support & positive workplace culture
- Highlight the importance of co-worker support

Future research needs to investigate the relationship between organizational, operational, and personal factors.