

Connection Grants

May 2024



Social Sciences and Humanities
Research Council of Canada

Conseil de recherches en
sciences humaines du Canada

Canada 

NSERC and SSHRC Data Centre Move

There will be a planned outage of our websites and several of our granting portals and applications from Friday, June 28, at 4 p.m. (ET) until Tuesday, July 2, 8 a.m. (ET).

- Corporate email and phone lines will remain functional.
- We anticipate a smooth transition, but are preparing for potential scenarios (e.g., extended outages).
- Should there be issues resuming service, check our social media accounts and dedicated web pages for updates.
- As a best practice, remember to keep a copy of your documents and grant application information in your personal files.

NSERC and SSHRC Data Centre Move

Visit our dedicated web page for a list of systems and websites that will be unavailable, and a list of precautionary changes to programs and corporate activities:

<https://info.nserc-crsng.gc.ca/move-demenagement>

<https://info.sshrc-crsh.gc.ca/move-demenagement>

If you have questions, contact your program liaison or the Helpdesk:

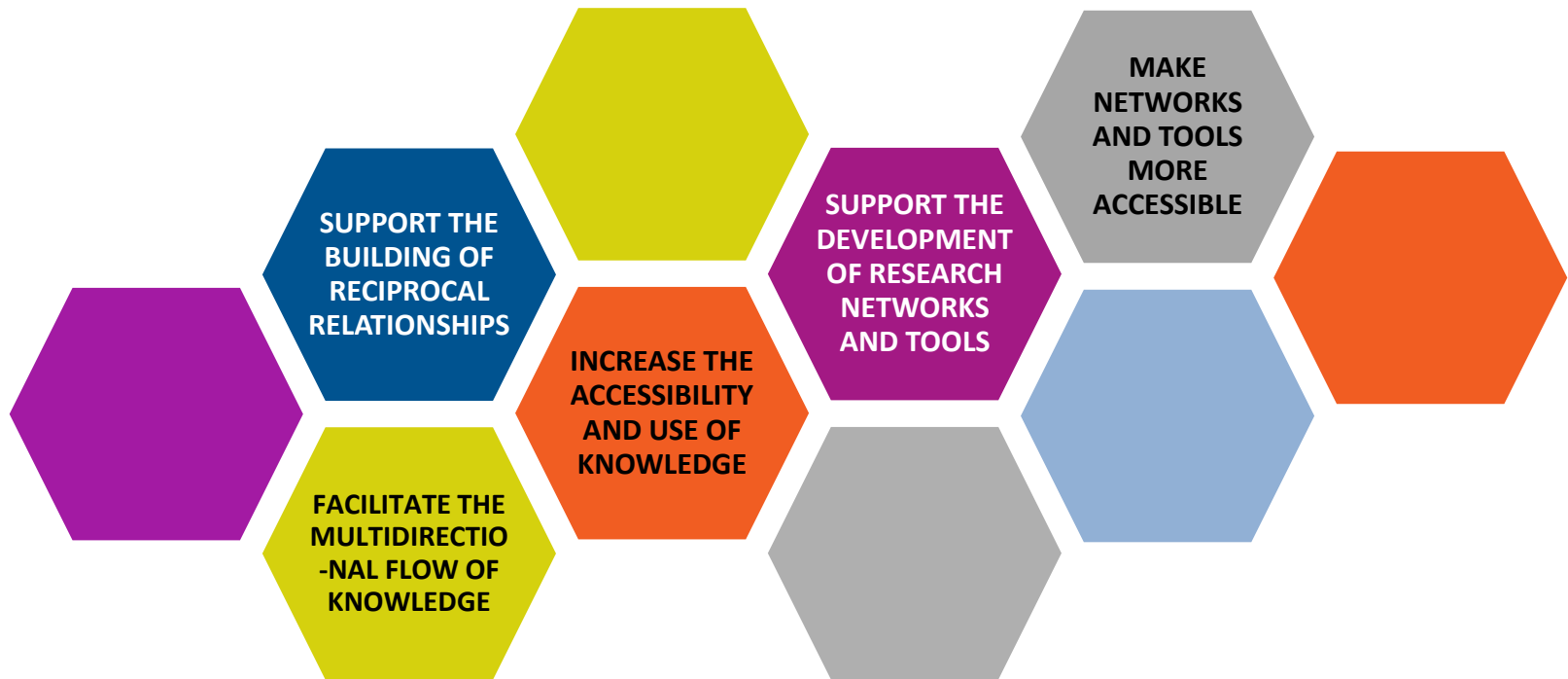
Toll-free: 1-855-275-2861

Email: webapp@nserc-crsng.gc.ca / webgrants@sshrc-crsh.gc.ca

SSHRC Program Architecture




Objectives of the Partnerships Program



Connection Grants

 **Support short term
KM initiatives –
maximum one year**

**Two Streams:
Events and
Outreach Activities** 

 **Engage with social
sciences and
humanities issues**

Events and Outreach Activities

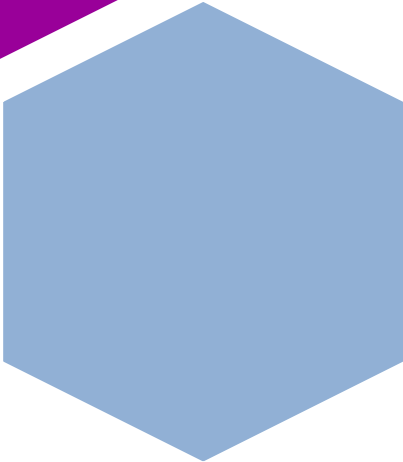


EVENTS:
\$7,000 to
\$25,000

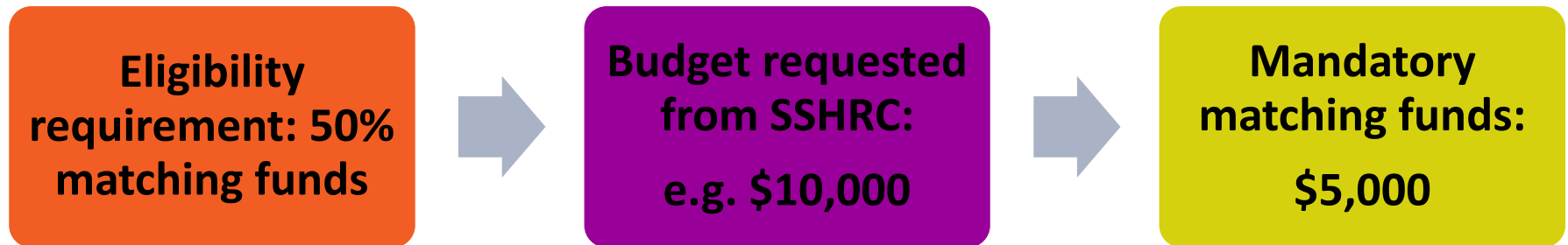
Short term activity
Completed within a week
Follow-up activities

Longer in duration
Engage larger public
Speaker series, travelling
exhibition, podcast, etc.

OUTREACH
ACTIVITIES:
\$7,000 to
\$50,000+



Matching Funds



For eligible expenses and cash/in-kind contributions :
[Tri-agency Guide on Financial Administration](#)

Letter of Support Example

Dear (name of applicant),

On behalf of (sponsoring organization), we have read your proposal and are pleased to provide support for your grant application, entitled “(title of your application)”, for the SSHRC Connection Grants competition.

We have read the proposal and agree to the role and level of participation of (sponsoring organization) outlined within the application.

(Sponsoring organization) will provide a cash contribution of \$ **specific dollar amount** towards the costs of (project activity). In addition, we will provide the following in-kind contribution(s):

- (in-kind contribution), **valued at \$ specific dollar amount**

Ineligible Connection Activities

RESEARCH

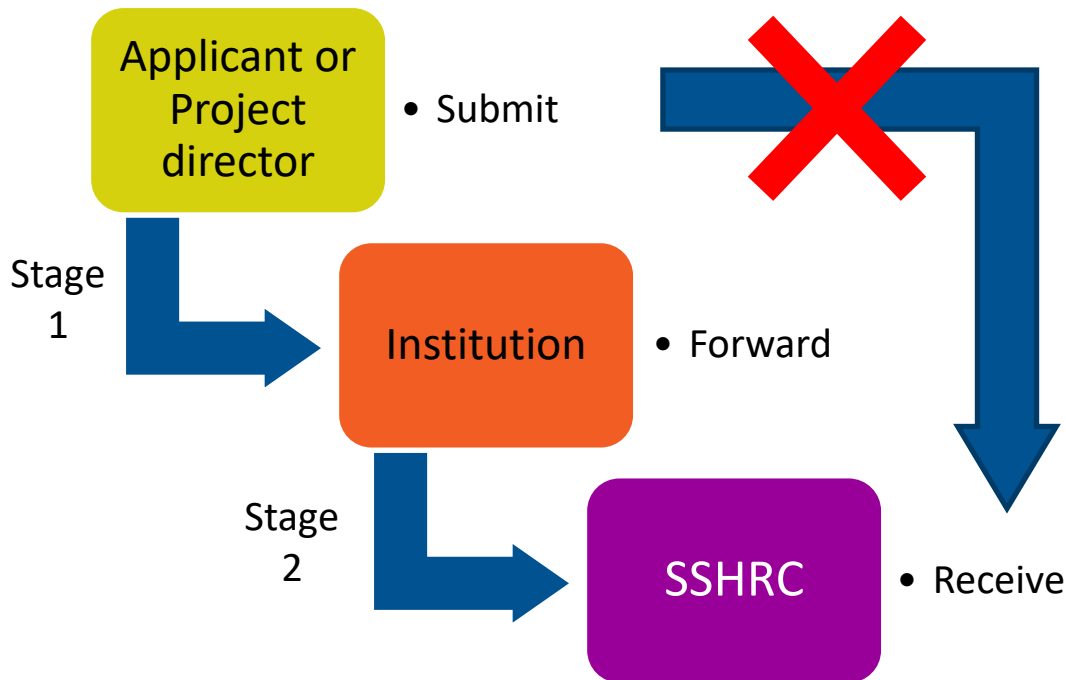
STAND-ALONE VOLUMES

ASSOCIATION ACTIVITIES

Two Ways to Apply



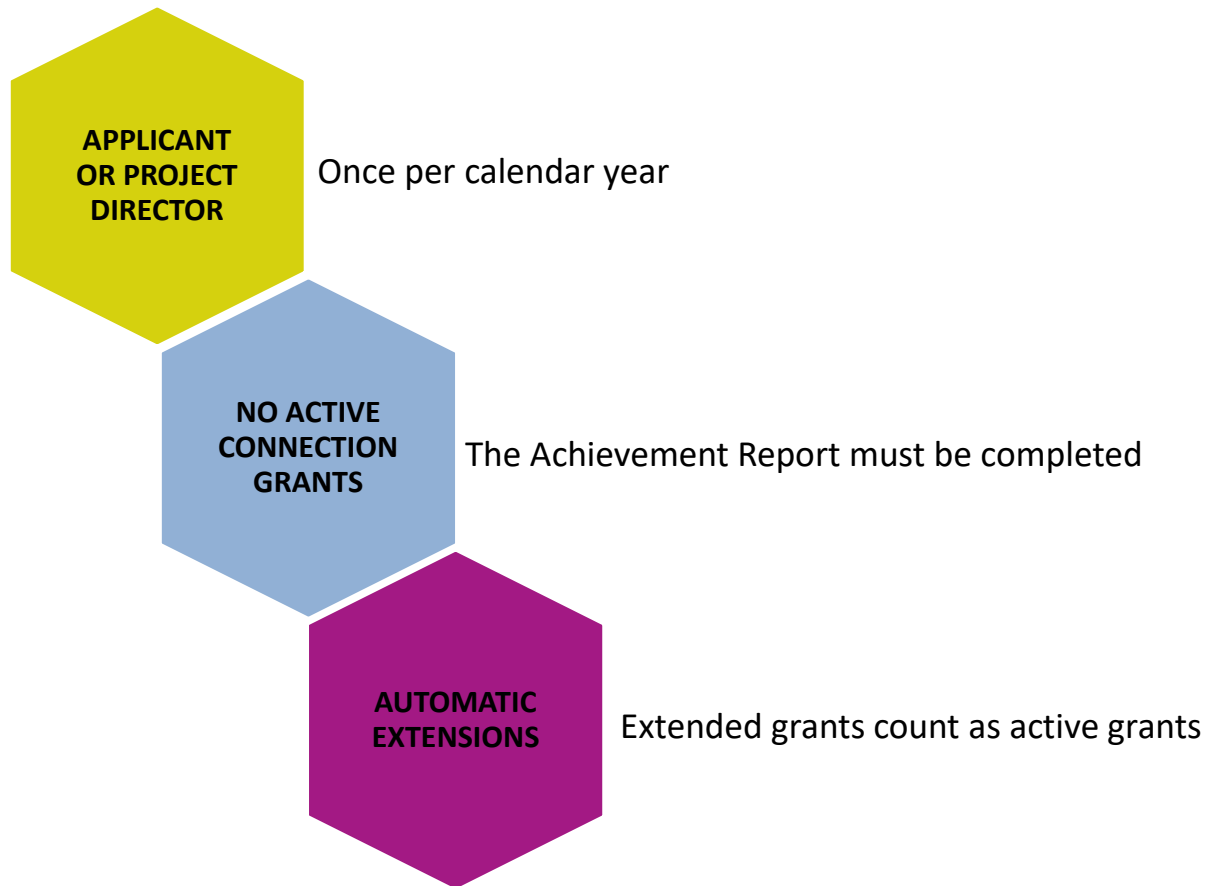
Submission Process



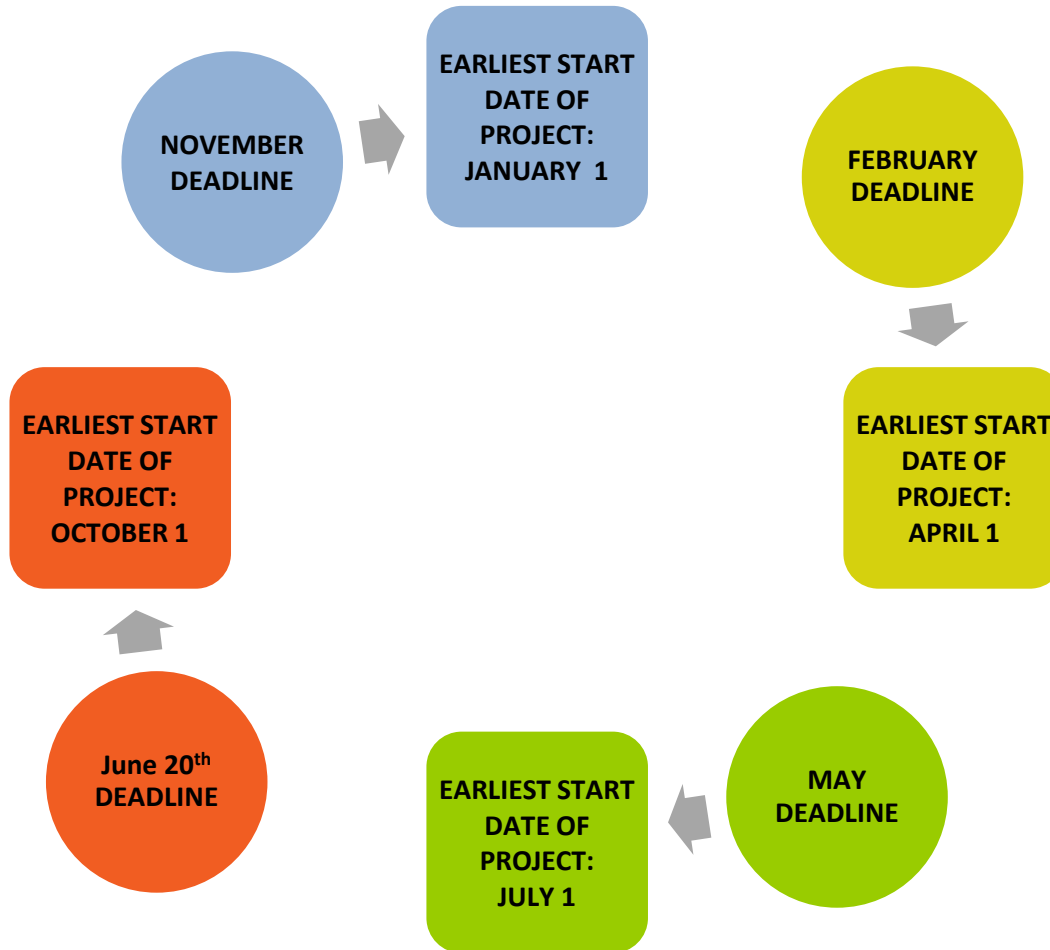
On SSHRC online system

- Applications submitted : Deleted 30 days after deadline date.
- Draft applications : Deleted if not accessed during a 12-month period.

Multiple Applications Regulations



When to apply?



Adjudication Process

FOUR ADJUDICATION COMMITTEES

MARCH (for February 1st deadline)

Results sent: April

JUNE (for May 1st deadline)

Results sent: July

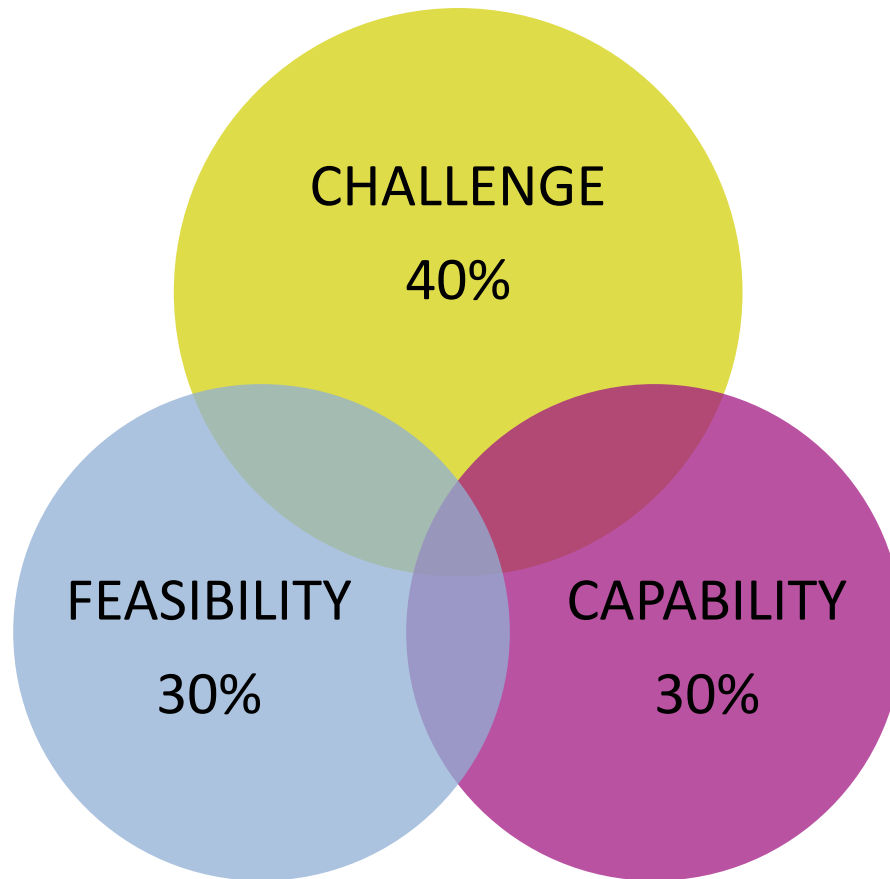
SEPTEMBER (for June 20th deadline)

Results sent: October

DECEMBER (for November 1st deadline)

Results sent: January

Adjudication Process



Feedback

Connection Grants

Scores	Yes
Descriptors	Yes, if discussed and unsuccessful
Additional comments	Yes, if applicable
Sextile category	Yes
Ranking	Yes, if successful
External reports	No

Committee Comment Form

1. Challenge—The aim and importance of the endeavour (40%):

Sub-criteria (No specific weighting assigned to each sub-criterion)	Unsatisfactory	Satisfactory to Good	Good to Very Good	Very good to Excellent
expected contribution to the preservation of, access to and/or mobilization of research knowledge;				X
appropriateness of the approach;			X	
evidence of the quality and significance of the research being mobilized;			X	
quality of training and mentoring to be provided to students, emerging scholars and other highly qualified personnel, and opportunities for them to contribute;				X
potential influence and impact within and/or beyond the social sciences and humanities research community; and			X	
<u>identification</u> of performance indicators.				X

2. Feasibility—The plan to achieve excellence (30%):

Sub-criteria (No specific weighting assigned to each sub-criterion)	Unsatisfactory	Satisfactory to Good	Good to Very Good	Very good to Excellent
probability of effective and timely attainment of the proposal's objectives;			X	
appropriateness of the requested budget, and justification of proposed costs;			X	

Notification of Competition Results

To institutions

- Post-secondary institutions
 - Results accessible through GSAP
 - Notifications sent through CARA
- NFPs
 - Results sent to financial contacts via our extranet

To applicants

- Sent directly to applicants via our extranet
- Result packages contain
 - Notice of Decision, Letter of Decision
 - If applicable: Notice of Award, Terms and Conditions, and Committee Comment Form

Please see our [Service Standards](#) for the notification of results timeline

Support of Tools for Connection-Related Activities

- Applicants can use grant funds up to \$50,000 to develop connection-related tools for the purpose of knowledge mobilization activities.
- Please see our [Guidelines for support of Tools for Research and Related Activities application process](#) for more information.

Indigenous Research

In May 2015, SSHRC launched new initiatives to support and promote Indigenous research and talent development.

Indigenous research [statement of principles](#) will serve to guide the implementation of SSHRC's current and future activities.

A revised definition of [Indigenous research](#) clarifies research “by and with” Indigenous Peoples and emphasizes and values the existing strengths, assets and knowledge systems of Indigenous Peoples and communities.

[Guidelines for the Merit Review of Indigenous Research](#) are intended to assist committee members in interpreting SSHRC's specific Challenge, Feasibility and Capability evaluation criteria in the context of Indigenous research.

Research Data Management Capacity Building Initiative

- Objectives:
 - develop and/or adopt data management standards, practices, tools and skills within and across disciplines and institutions, with a focus on the social sciences and humanities;
 - connect researchers or students with data management professionals and service providers (e.g., librarians, programmers, specialists in research ethics, etc.), and other stakeholders (e.g., research subjects and users) to increase knowledge of data management;
 - share and develop knowledge and skills relating to data collection and storage, metadata, preservation, retention, sharing, credit and citation;
 - share and develop knowledge and skills related to the responsible ownership, control, access and possession of data used or created in the context of Indigenous research (e.g., the application of OCAP® principles); and
 - through other activities, enable the social sciences and humanities research community to strengthen its ability to fulfill the roles and responsibilities indicated in the Tri-Agency Statement of Principles on Digital Data Management, and the requirements proposed in the draft tri-agency research data management policy.
- **SSHRC intends to fund at least 10 meritorious proposals per competition** to help the Canadian social sciences and humanities research community strengthen its capacity for data management

Joint Initiative for Digital Citizen Research

- You can select this initiative in your Connection Grants application.
- A joint initiative with the Department of Canadian Heritage. **The initiative has its own budgetary envelop, which is entirely funded by Canadian Heritage.**
- Supports research and related activities on, or related to, online disinformation in the Canadian context
- The Joint Initiative for Digital Citizen Research supports the goals of the Government of Canada's approach to protecting democracy and the [Digital Citizen Initiative](#)

Frequently Asked Questions

My Connection project is strictly an Outreach Activity – who should I include as a Presenter?

For Connection projects, “Presenters” are not only people who will give a presentation at an event. Presenters are defined by SSHRC as individuals who will make an active contribution to the project’s objectives and/or the production of concrete deliverables (e.g. preparing exhibition materials, producing a podcast). You can think of them as participants.

Frequently Asked Questions

How many Presenters should I include in my application?

Some projects may have hundreds of presenters, and there is no problem with that. However, the list on the application form is limited to 15 presenters to prevent applicants from overloading their application and committee members by listing all presenters. It is recommended that Principal investigators (PIs, known as Applicant or Project director) submit a presenters page for only 15 key presenters at their event or participants in their outreach activity. PIs should include in the list those for whom they are requesting SSHRC's funding. When appropriate, the list should also include students as well as established and emerging scholars. While PIs may provide details on all presenters (including the 15 key presenters listed) and their specific role in the project description or budget justification section, it is important to note that they should avoid overloading their application if not relevant.

Frequently Asked Questions

Are recurrent annual events eligible for Connection Grant support?

Yes, recurrent annual events are eligible for Connection Grant support, but you must demonstrate how the event differs from what was previously funded (e.g. what new knowledge is being mobilized, what new methods are being used).

Frequently Asked Questions

I have been invited to a conference abroad; can I apply for a Connection Grant to support my travel expenses?

No. Connection Grants are not travel grants. They are intended to support applicants and project directors who are running a knowledge mobilization event or activity. Connection funding can support applicants' travel costs and other expenses if they are organizing an event or activity abroad. In this case, the applicant must demonstrate within the application why the event needs to be held outside Canada and its potential to mobilize Canadian research on an international stage.

Frequently Asked Questions

Can students participate as co-applicants?

No. Students can only participate as collaborators. Moreover, if a student is a collaborator on the project team, they cannot be paid a stipend or a wage from the grant.

Frequently Asked Questions

Can my application include bursaries to encourage increased student attendance?

No. Students must have an active role in your Connection project in order to be eligible for support.

Frequently Asked Questions

How do I know if something is eligible for SSHRC support?

SSHRC grants are governed by the Tri-Agency Guide on Financial Administration. If you are not sure whether something you are proposing would be eligible, please contact us. Funding opportunity eligibility rules will be considered alongside Tri-Agency Financial Administration rules – meaning that eligible and non-eligible expenses specific to the Connection Grants prevail over eligible and non-eligible expenses outlined in the Guide.

Frequently Asked Questions

I just learned that my Connection Grant proposal was not successful. Can I resubmit for the next competition?

Individuals, as applicants or project directors, can only apply to the Connection Grants funding opportunity once per calendar year.

Frequently Asked Questions

Are registration fees an eligible expense?

No, registration fees are not an eligible expense, nor is it an eligible matching in-kind/cash contribution.

Helpful Links

[Connection Grants](#)

[Research Partnerships Program](#)

[Connection Grants - Individual, Application Instructions](#)

[Connection Grants - Institution, Application Instructions](#)

[Indigenous Research](#)

[Joint Initiative for Digital Citizen Research](#)

[Research Data Management Capacity Building Initiative](#)

[Guidelines for Effective Research Training](#)

[Guidelines for Effective Knowledge Mobilization](#)

[Guidelines for Cash and In-Kind Contributions](#)

[SSHRC definition of Research-Creation](#)

[Connection Achievement report](#)

[Tri-Agency Guide on Financial Administration](#)

Your questions

Contact information:

Program Support: connection@sshrc-crsh.gc.ca

Technical Support: webgrant@sshrc-crsh.gc.ca

Thank you!



Social Sciences and Humanities
Research Council of Canada

Conseil de recherches en
sciences humaines du Canada

Canada 